



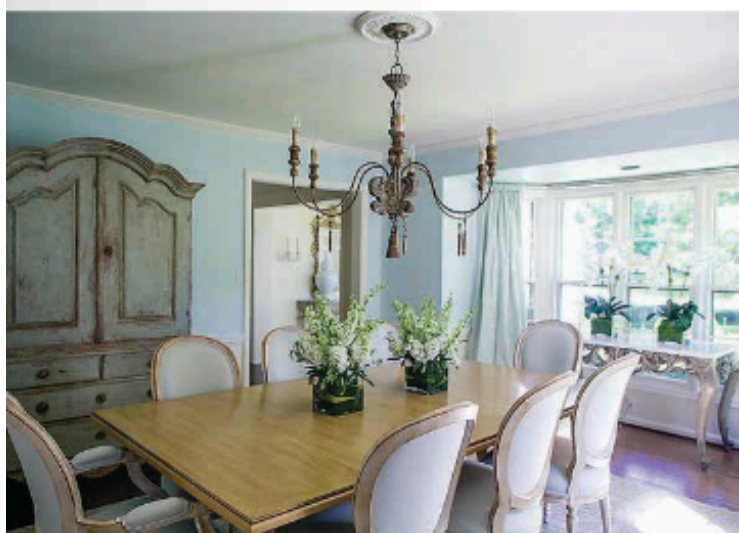
# 1<sup>st</sup>

## GORMAN'S INTERIOR DESIGN

The homeowner wanted a round dining room with a round table (this one features a 60-inch maple top), so that each guest would feel as though they are the center of attention. The table (with a black-rubbed finish) and silk-fabric chairs, are from Hickory White. No rug was used, because the client wanted a very clean look — the flooring features 5-inch, hand-scraped birch planks. The eight-light George Kovacs pendant fixture crowns the room beautifully, while simple wall sconces finish the simplicity of this design, featured on the cover of the magazine.

## DESIGNER'S ACHIEVEMENT

A wall of custom-made cabinetry in a pretty, sage finish was installed to provide much-needed additional storage, as well as to anchor a new pass-through to the kitchen.



# 2<sup>nd</sup>

PORT MFG. & DESIGN



# 3<sup>rd</sup>

LAURA ZENDER DESIGN



2<sup>nd</sup>  
↑

PORT MFG. & DESIGN

1<sup>st</sup>  
↑

COTTAGE COMPANY INTERIORS, WITH COTTAGE COMPANY OF HARBOR SPRINGS

This lakeside cottage in Harbor Springs epitomizes traditional cottage style. Layers upon layers of detail make each room incredibly special. Every wall and ceiling has some wood feature, including coffered and beamed ceilings, bead board, shiplap siding, and other types of wainscoting. Calcutta Caldia marble is used on countertops, floors, shower tiles, and fireplace surrounds. Furnishings are traditional in style, with many antiques and reproductions placed throughout to create an elegantly collected look.

3<sup>rd</sup>  
→

DESROSIERS  
ARCHITECTS





# 1<sup>st</sup>

**KATHLEEN MCGOVERN STUDIO OF INTERIOR DESIGN**  
 This Naples Bay, Fla., high-rise features appropriate fabrics that can withstand a harsh western beach exposure. Besides a vast expanse of glass, the space has multiple doors to a wraparound veranda that are continually open to the elements, exposing the draperies to the salt air. Great emphasis is placed on not only style, but selecting fabrics and trims that are sun- and saltwater-tolerant. Because the view was king, stationary panels and sheer Sunbrella fabrics were chosen. Living room sheers are outlined by a discreet row of tiny white shells, while the tailored family room sheers have a ribbon-and-ring detailed band decorating the leading edge of the draperies.

## DESIGNER'S VISION

The designer aimed to evoke the whimsical quality of childhood, so she chose polka dot-embroidered fabric with a pom-pom trim and a similar valance; both draw from the playful spirit of vintage circus spectacles.



# 2<sup>nd</sup>

PORT MFG.  
& DESIGN

# 3<sup>rd</sup>

MEM DESIGN  
GROUP



## 2013: ANNE STRICKLAND

PORT Mfg. & Design,  
Birmingham  
[portmfg.com](http://portmfg.com)

**A LESSON LEARNED:** "I learned to balance my work and family life after my daughter, Corinne (now 1), was born," Strickland says.

**HIGH POINTS SINCE 2013:** "Meeting and working with new families and clients from referrals — and seeing how delighted they are with their homes!"



**TRULY TIMELESS** Interior designer Anne Strickland's client wanted a living room that felt light and bright, with a slightly feminine touch. And voila ... here it is! "By layering rich silks and luscious mohair with creamy textures and classic liners, a balance is achieved that is both luxurious and inviting," the Birmingham-based interior designer says. "My client and I worked together to create a space that felt crisply timeless and classically elegant."