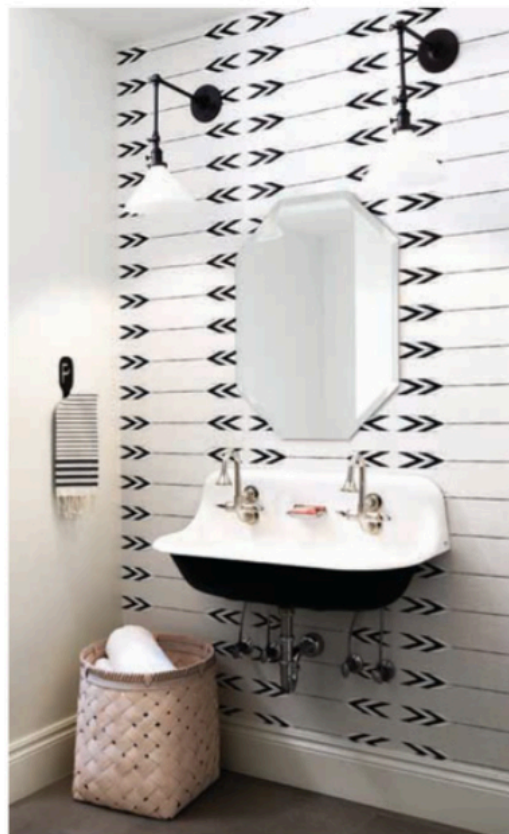


Port Mfg. & Design, 1ST
 with The Blake Company

Due to space restrictions, the plumbing here was consolidated on one wall, leaving very little room for flexibility. When walls were being torn down, the unlikely gift of 30 additional inches was granted, making it possible to move the toilet to a private water closet. A Directoire-style vanity in a lacquered black finish with unlacquered brass details is both functional and beautiful. Ample storage is concealed, and a side towel rack keeps the counter and wall clutter-free. The tone-on-tone geometric wallpaper adds punch without overpowering the space.



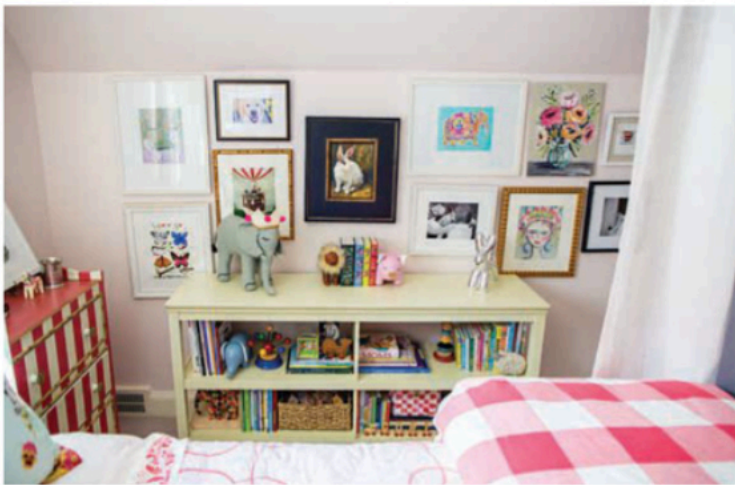
Chatham House Interior Design, 2ND
 with Patrick Widing Custom Homes



Dayna Flory 3RD
 Interiors

Armina Interiors | 1ST

When creating this space, the designer was challenged with giving the room its jungle-inspired look without creating too much of a theme. The answer was to give the youthful space a sophisticated spin by mixing luxe textures — from the zebra rug and the cornice board to the custom pillows and zigzag pouf — with a vibrant green and blue color palette. A custom mural, papier-mâché animal heads, and a gallery wall of custom-framed bugs give the room an artful edge. To ensure there's space for schoolwork and relaxing, a window seat, loft bed, desk and casual modular sofa complete the room.



Port Mfg. & Design | 2ND



Gorman's Interior Design, with Arteva Homes | 3RD

Detroit Home Design Awards participants share insights on their favorite combinations, plus we showcase our top duets

WHAT'S YOUR CURRENT FAVORITE COMBO?

Updated antiques — I call it 'Curated and Contemporary,' like pairing an antique chest and its authentic patina with something like a bold abstract painting or a contemporary stone bowl, with a sculptural orchid arrangement. It's all about telling a story.

— ANNE STRICKLAND, DHDA WINNER
PORT MFG. & DESIGN, BIRMINGHAM

